



# Flap Strip

Flexible wing doors  
and flexible strip doors





# Flap

## Flexible wing door

### Easy and functional

Flap is a solid swing door with flexible wings. Thanks to its absolutely reliable structure it helps to save energy and make passing through faster. It is available in the manual version: with manual wing opening, or in the servo-assisted version: with pneumatic and electropneumatic functioning.

A wide choice of flexible curtains is available.

### Sturdy and reliable structure

Its rugged metal structure frame in galvanized steel or in stainless steel, consists of a specially shaped section which results in a high mechanical strength and elasticity.

Reclosing mechanisms consist of a torsion spring adjustable system, galvanized fastening plates; revolving floor drains are mounted on ball bearings.

It is available in a wide choice of (DIN 4102) totally transparent and self extinguishing, flexible curtains, or coloured PVC or anti-abrasion rubber; frame fastening ends are strengthened with special polyester, double inserts.

### Versatile in its three versions

Flap is available in three versions:

**Standard**, with push manual opening and spring closing.

**Contact**, in semiautomatic version.

The door opens by a mechanical piston placed on each wing, applying pressure onto the curtains; opening is two-directional, closing is by spring.

**Automatic**, with a couple of pneumatic pistons placed in a thrust position compared to the opening, which, by means of a remote control (i.e. radar, radio remote controls, etc.) actuate mono-directional wing opening.

Closing is by spring.

An optional, "double effect" system is also available, to control opening, closing and stop by pneumatic logic.

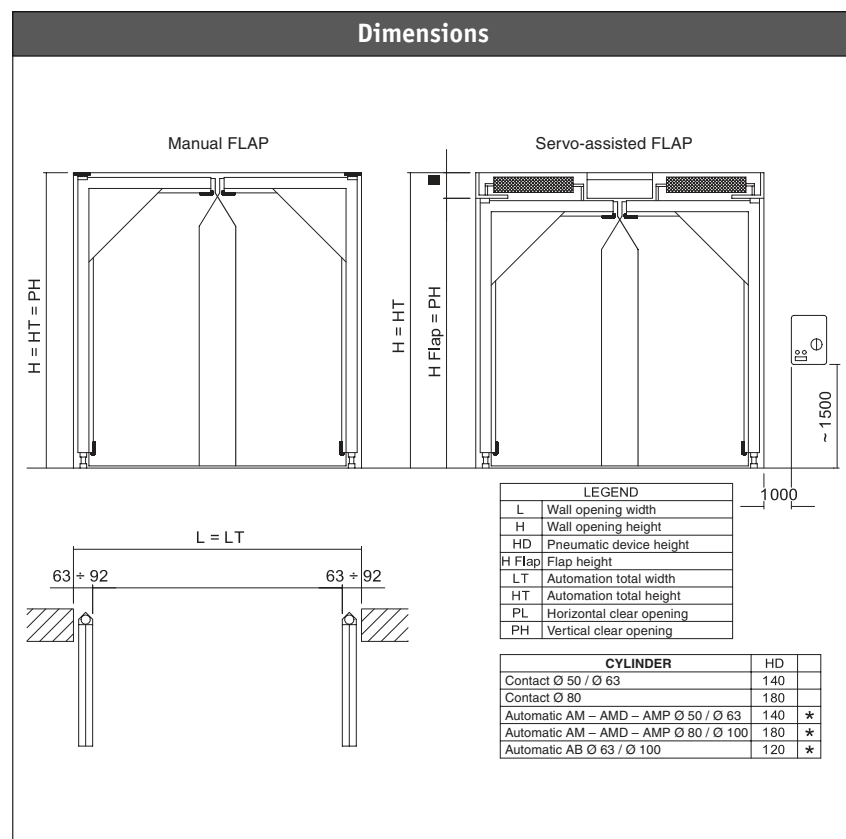
### Main technical features

- Galvanized steel or satin-finish AISI 304 stainless steel frame for two-wing doors.
- Spring closing mechanisms and floor drains with ball-bearings.
- RAL coating. Extra charge for smooth, epoxide-powder coating.
- FLAP servoassistance electropneumatic and pneumatic devices, consisting of two pneumatic pistons with accessories are available in the following types:

**CONTACT CT.** Push-button, two-directional, pneumatic device (CT with guiding plates and galvanized steel casing, CT-Y with special guiding plates and stainless steel casing).

**AUTOMATIC AM.** Mono-directional pneumatic device with pneumatic opening and spring closing, including electropneumatic control panel (AM with guiding plates and steel casing, AM-Y with special guiding plates and stainless steel casing).

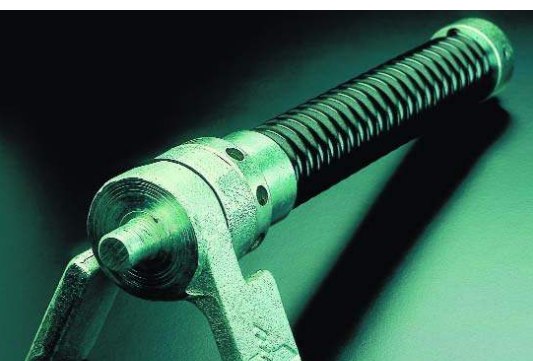
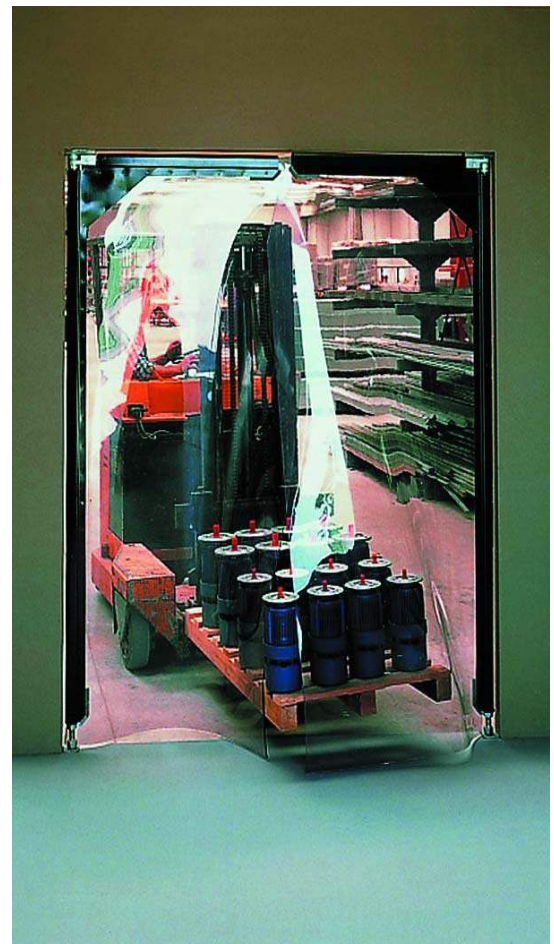
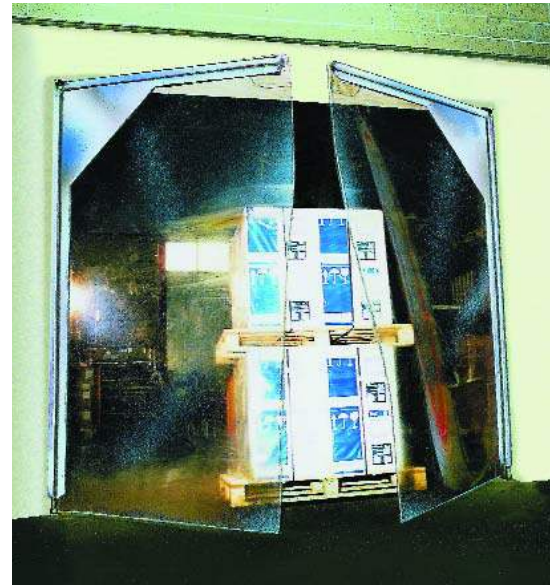
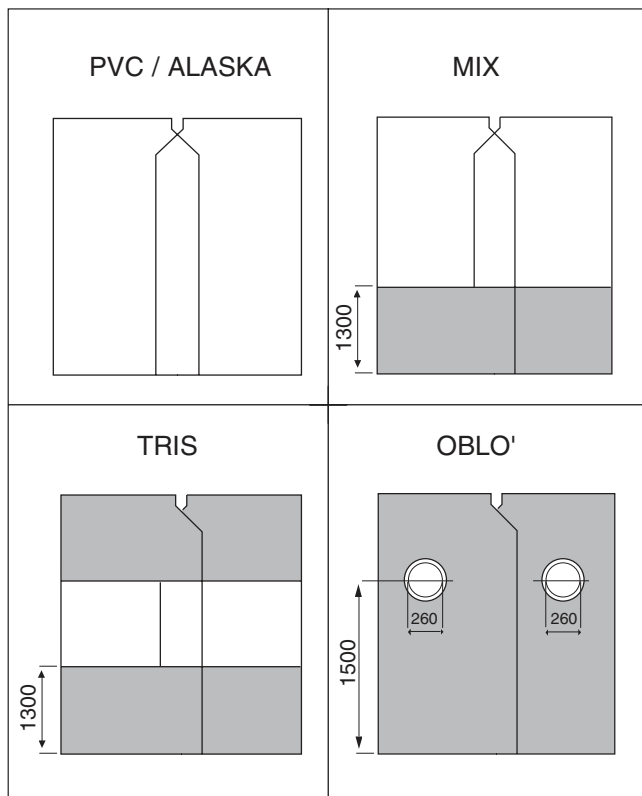
**AUTOMATIC AMP.** Mono-directional pneumatic device with pneumatic opening and spring closing, including pneumatic logic control panel.



## ▶ Technical features of the curtain

PVC curtain with strengthened borders, available in the following versions:

- ▶ Transparent PVC < 3000 thickness = 5 mm, > 3000 thickness = 7 mm
- ▶ ALASKA PVC, transparent, for very low temperatures, thickness = 5 mm
- ▶ Grey and yellow PVC, flexible curtain, thickness = 5 mm, available in the following versions:
  - MIX, with lower skirting in painted PVC and transparent upper part
  - TRIS (with three sections) with lower skirting and head in painted PVC, transparent central part
  - OBLO (with portholes) in coloured PVC with portholes in yellow moplen
- ▶ Anti-abrasion black rubber flexible curtain, with 2 strengthening inserts in MIX and TRIS versions.





# Strip

## Strip flexible doors

### Quick fastening and high operational flexibility

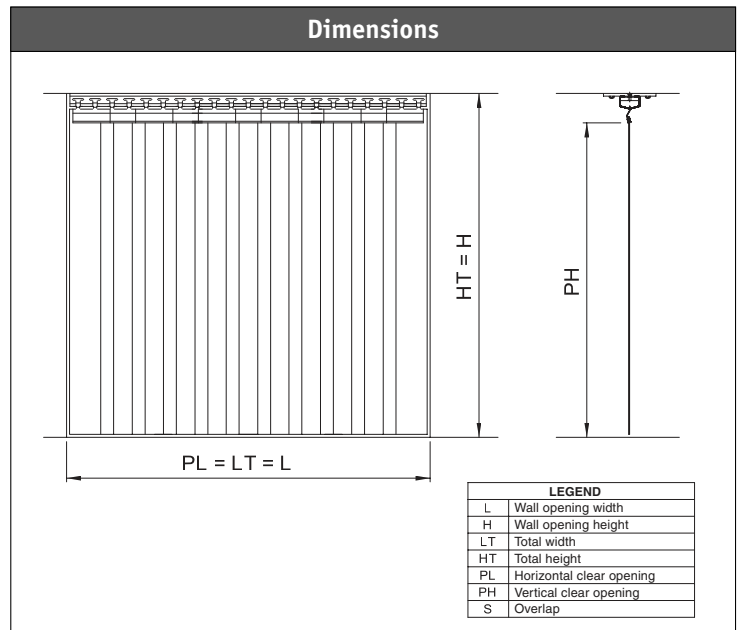
Strip is the simple transparent PVC door, suitable to divide big and small spaces. Thanks to Strip, company departments can be functionally separated without losing luminosity. Passing from one department to another is totally trouble-free and thanks to its high operational versatility Strip can satisfy any special requirement. You can have it fixed or sliding on a straight-line track.

It is equipped with Rapid, the special quick fastening/unlocking system, which allows trouble-free installation, quick unlocking of the strips with the possibility of drawing them to the side and placing them one on top of the other when the door is not used for a period of time or closing is not needed.

It helps reduce loss of heat because it opens just enough to let vehicle/people, etc. through.

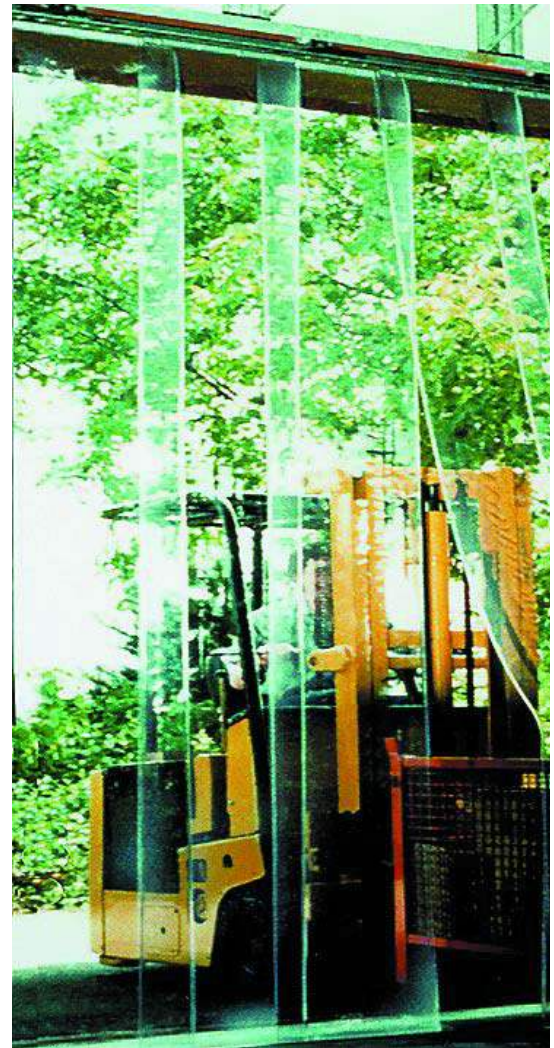
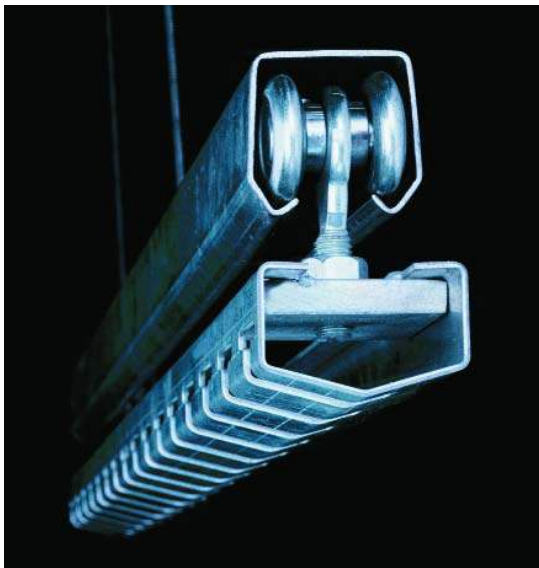
### Main technical features

- ▶ Special RAPID system, with galvanized steel or AISI 304 stainless steel modular metal structure, enabling trouble-free assembling/disassembling of the strips. This system allows to change strip arrangement according to necessity and in idle periods, side tiding up is possible.
- ▶ Flat fitting bearings for under crosspiece fastening or corner fitting bearings for front fastening when no other installation solution is possible.
- ▶ Galvanized steel single or double tracks with flat and corner fitting bearings.



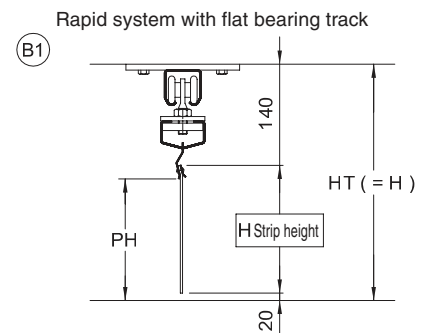
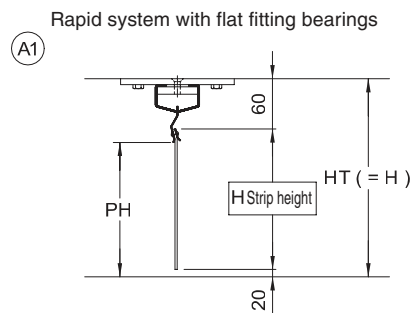
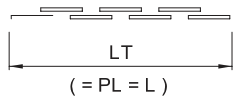
## Strip features

- Self-extinguishing PVC, cut-to-measure strips with rounded borders, fastened on special swinging jaws, which, allowing strips to swing, prevent them from being damaged during passing through.
- A wide range of strip arrangement solutions allow to satisfy any installation requirements.

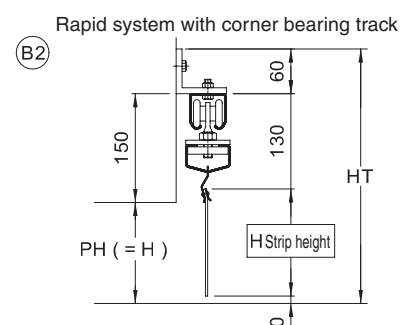
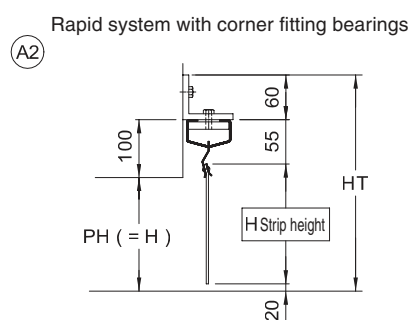
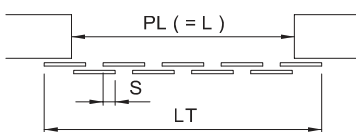


### Types of installation

#### Within doorway installation



#### Outside doorway installation





## Safety and control systems

- ▶ **RMM** - Microwave radar with function discrimination: vehicle - pedestrian crossing direction
- ▶ **TEL 2** - Remote control for RMM radar adjustment
- ▶ **BIX LP2** - Self-learning, two-channel mini radio remote control
- ▶ **BIX LP2P** - 433 MHz, two-channel, push-button remote control
- ▶ **LAB 9CS**
- ▶ **LAMP H** - 24 V flashing beacon
- ▶ **XEL 2** - Infra-red photocell for outdoor installation, general use
- ▶ **APS** - Automatic anti-panic system
- ▶ **INVERTER** - Electronic control panel with speed adjustment

## Regulations

Use only DITEC accessories and safety devices for automation system installation.

DITEC actuators are CE-marked. They are designed and built in compliance with the safety requirements defined in the Machinery Directive (98/37/EC), Electromagnetic Compatibility Directive (89/336/EEC) and Low-Voltage Directive (73/23/EEC). DITEC S.p.A. reserves the right to make any changes whatsoever in order to upgrade its products.

Ditec products are constantly improved. As a consequence, technical data as listed in this leaflet are not to be considered binding. Further information can be found in our technical manuals, available on the website [www.ditec.it](http://www.ditec.it)



RMM



TEL 2



BIX LP2



BIX LP2P



LAB 9CS



LAMP H



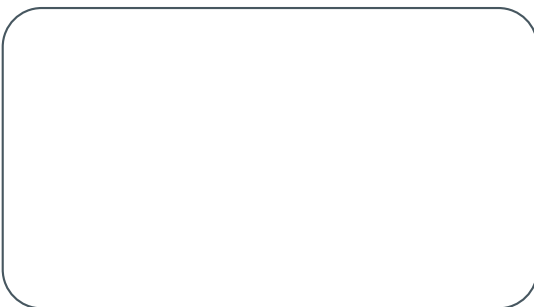
XEL 2



APS



INVERTER



**DITEC S.p.A.**

Via Mons. Banfi, 3 - 21042 Caronno Pertusella (VA) - ITALY  
Tel. +39 02 963911 - Fax +39 02 9650314  
[www.ditec.it](http://www.ditec.it) - [ditec@ditecva.com](mailto:ditec@ditecva.com)



ISO 9001  
Cert. n° 0957/1

**DITEC BELGIUM**  
**DITEC DEUTSCHLAND**  
**DITEC FRANCE**  
**DITEC SVIZZERA**  
**DITEC AMERICA**

LOKEREN  
OBERURSEL  
PALAISEAU  
BALERNA  
ORLANDO-FLORIDA-USA

Tel. +32 9 3560051  
Tel. +49 6171914150  
Tel. +33 1 64532860  
Tel. +41 91 6463339  
Tel. +1 407 8880699

Fax +32 9 3560052  
Fax +49 61719141555  
Fax +33 1 64532861  
Fax +41 91 6466127  
Fax +1 407 8882237

[www.ditecbelgium.be](http://www.ditecbelgium.be)  
[www.ditec-germany.de](http://www.ditec-germany.de)  
[www.ditec.fr](http://www.ditec.fr)  
[www.ditecswiss.ch](http://www.ditecswiss.ch)  
[www.ditecamerica.com](http://www.ditecamerica.com)